

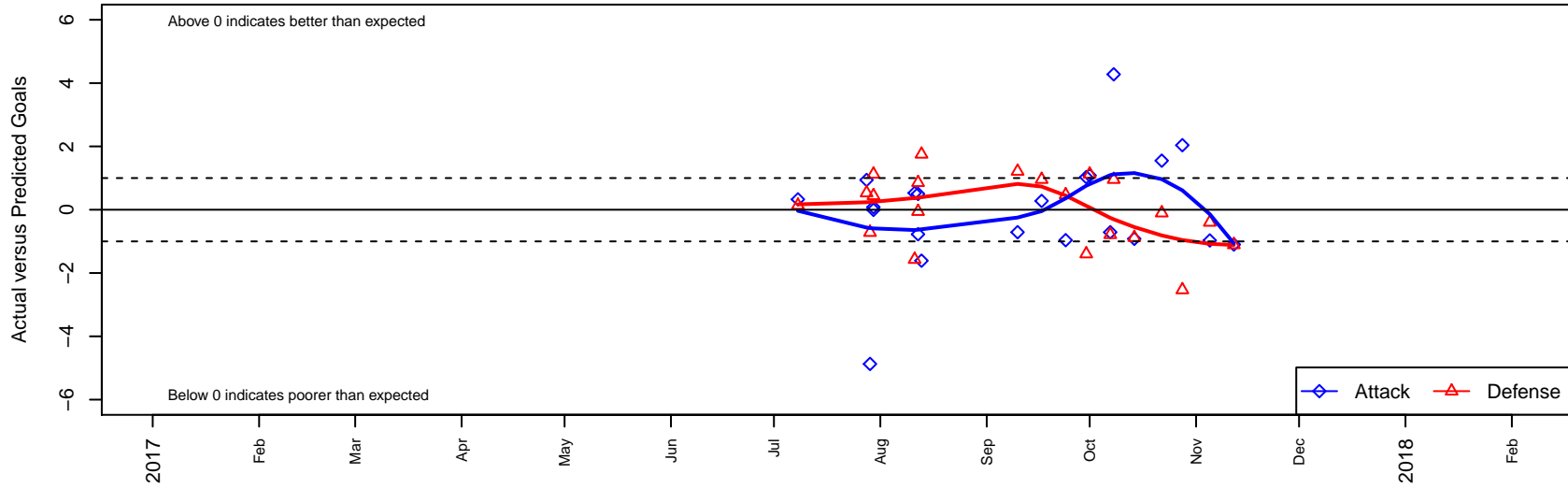
NEU White G04

Northeast United
 Portland, OR
 G04 total strength=1327
 attack=6.76 defense=5.7
 fall league = PTT G04 Premier White

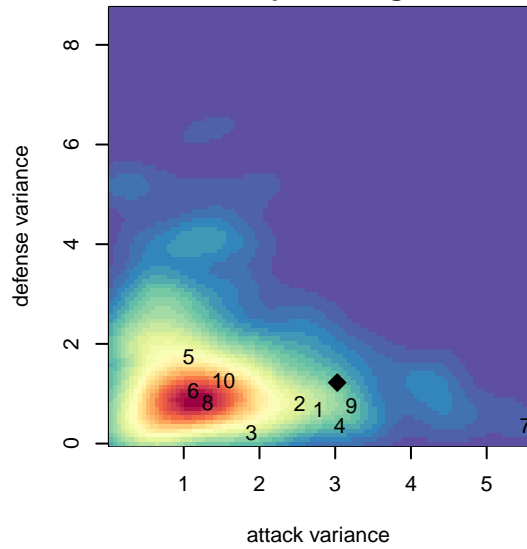
alt names used:
 NEU PDX 04G NEU WHITE
 NEU PDX 04G NEU WHITE (OR)
 NEU PDX 04G White
 NEU PDX WHITE (OR)

Venues played:
 2017 PCU Summer Classic U13-U14 Gold
 2017 Oswego Nike Cup Silver U14
 2017 Bend Premier Cup Lindsey Horan (Gold)
 2017 PTT G04 Premier White

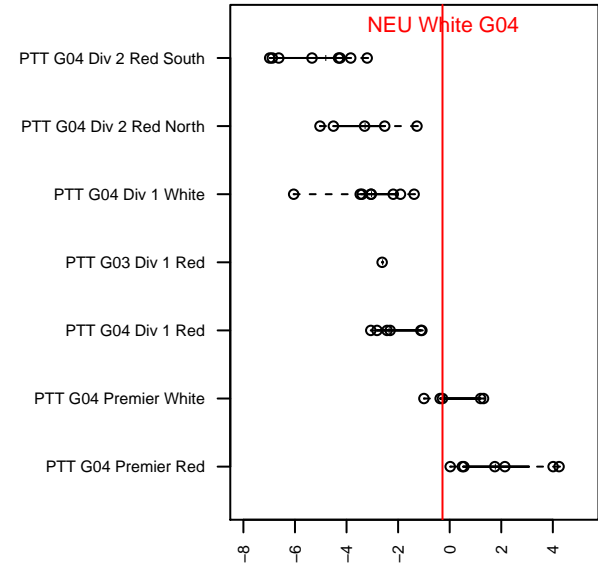
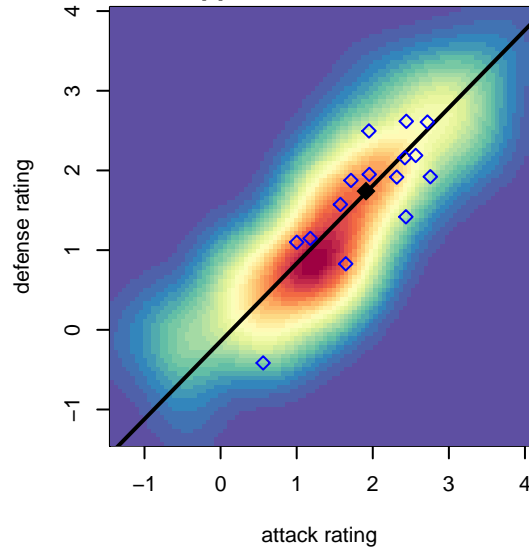
NEU White G04
 Dots are actual minus expected GF (blue circles) and GA (red triangles).
 Blue line is smoothed change in attack strength. Red is smoothed change in defense strength.



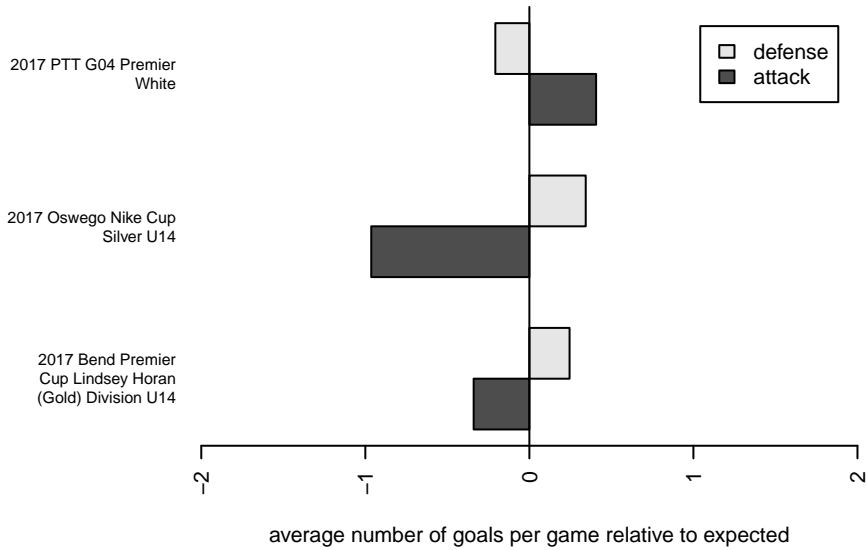
**attack and defense variance (black dot)
relative to other teams
and top 10 in region**



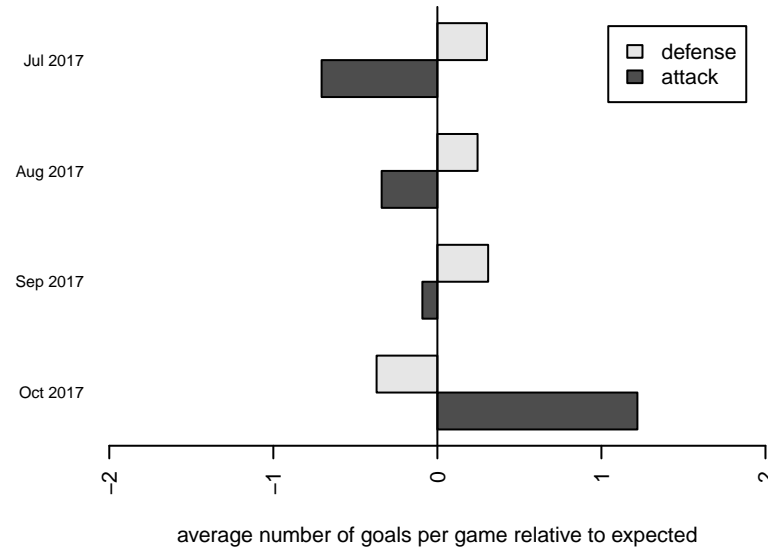
**attack and defense rating
relative to others at age
and all opponents in last 13 months**



Performance relative to 13 month average



Performance relative to 13 month average



| date | home | | away | | venue | pred.home | pred.away |
|-------------|-------------------------------|---|------------------------------|---|--|------------------|------------------|
| 2017-11-12 | BSC Portland Black G04 | 2 | NEU White G04 | 0 | 2017 PTT G04 Premier White | 0.89 | 1.10 |
| 2017-11-05 | NEU White G04 | 0 | Washington Timbers Red 2 G04 | 2 | 2017 PTT G04 Premier White | 0.97 | 1.60 |
| 2017-10-28 | Bend FC Timbers Red G04 | 5 | NEU White G04 | 3 | 2017 PTT G04 Premier White | 2.47 | 0.96 |
| 2017-10-22 | NEU White G04 | 3 | FC Portland Navy G04 | 1 | 2017 PTT G04 Premier White | 1.45 | 0.90 |
| 2017-10-14 | CYSA Timber Barons Green G04 | 2 | NEU White G04 | 0 | 2017 PTT G04 Premier White | 1.12 | 0.92 |
| 2017-10-08 | Cascade Rush Clash G05 | 0 | NEU White G04 | 7 | 2017 PTT G04 Premier White | 0.95 | 2.72 |
| 2017-10-07 | NEU White G04 | 0 | Crossfire OR Blue I G04 | 3 | 2017 PTT G04 Premier White | 0.71 | 2.21 |
| 2017-10-01 | NEU White G04 | 2 | CYSA Timber Barons Green G04 | 0 | 2017 PTT G04 Premier White | 0.92 | 1.12 |
| 2017-09-30 | Washington Timbers Red 2 G04 | 3 | NEU White G04 | 2 | 2017 PTT G04 Premier White | 1.60 | 0.97 |
| 2017-09-24 | NEU White G04 | 0 | Bend FC Timbers Red G04 | 2 | 2017 PTT G04 Premier White | 0.96 | 2.47 |
| 2017-09-17 | NEU White G04 | 3 | Cascade Rush Clash G05 | 0 | 2017 PTT G04 Premier White | 2.72 | 0.95 |
| 2017-09-10 | Crossfire OR Blue I G04 | 1 | NEU White G04 | 0 | 2017 PTT G04 Premier White | 2.21 | 0.71 |
| 2017-08-13 | Capital FC Timbers Red G04 | 0 | NEU White G04 | 0 | 2017 Bend Premier Cup Lindsey Horan (Gol | 1.75 | 1.61 |
| 2017-08-12 | NEU White G04 | 1 | Westside Timbers Copa TS G04 | 2 | 2017 Bend Premier Cup Lindsey Horan (Gol | 0.50 | 1.94 |
| 2017-08-12 | NEU White G04 | 0 | Rocklin YSC Navy G04 | 1 | 2017 Bend Premier Cup Lindsey Horan (Gol | 0.78 | 1.86 |
| 2017-08-11 | NEU White G04 | 1 | ETFC Akers Black G04 | 4 | 2017 Bend Premier Cup Lindsey Horan (Gol | 0.47 | 2.43 |
| 2017-07-30 | Eastside Timbers Black G04 | 0 | NEU White G04 | 2 | 2017 Oswego Nike Cup Silver U14 | 0.44 | 2.00 |
| 2017-07-30 | CYSA Timber Barons Green G04 | 0 | NEU White G04 | 1 | 2017 Oswego Nike Cup Silver U14 | 1.12 | 0.92 |
| 2017-07-29 | Crossfire OR LOSC Blue II G04 | 1 | NEU White G04 | 4 | 2017 Oswego Nike Cup Silver U14 | 0.28 | 8.87 |
| 2017-07-28 | WUFC Gold G04 | 0 | NEU White G04 | 3 | 2017 Oswego Nike Cup Silver U14 | 0.53 | 2.06 |
| 2017-07-08 | FC Portland Navy G05 | 1 | NEU White G04 | 1 | 2017 PCU Summer Classic U13-U14 Gold | 1.14 | 0.67 |